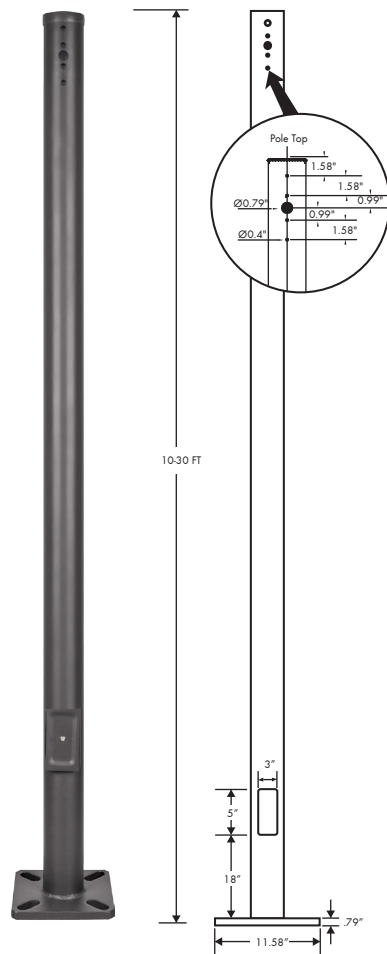


STRAIGHT ROUND STEEL POLES: 3", 4" ,5" Diameter



APPLICATIONS

Retail Centers, Industrial Parks, Schools, Universities, Public Transit, Airports, Office Buildings, and Medical Facilities

FEATURES

Specifications

Conforms to ASTM-A 500 Grade B: Minimum Yield Strength of 46,000 PSI. Pole Height Range From 10' to 30': Usage case is based on luminaire applications.

Finish

Textured architectural bronze powder coat finish: Baked to ensure maximum paint adhesion, hardness, and durability.

Anchor Bolts

Anchor bolts are included, sized based on pole data chart for the selected pole size.

Base Cover

Poles are provided with two -piece formed steel base cover that is easily assembled and fitted over the pole base.

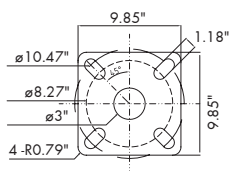
Pole Height

Shown below in ordering matrix are the available standard pole height. Usage is based on selected luminaire application.

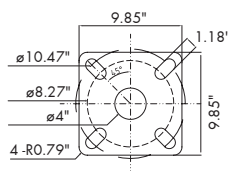
Mounting Options

Standard length poles include 2 3/8" O.D. tenon, side drilled 2@180°, polycarbonate top cover and hole plugs for unused drilling locations.

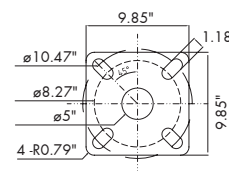
Our standard equipment is to make a top adapter with 2.5 inches. There is no opening on the top of the light pole. If ARM installation is needed, the top adapter shall be removed and holes shall be opened on the wall of the light pole. Finally, seal the top with a plastic rain cover.



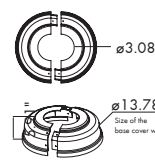
3" Flange



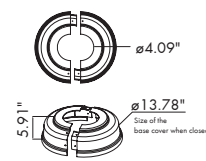
4" Flange



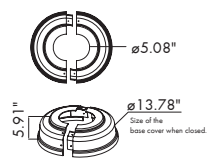
5" Flange



3" Flange
Base Cover



4" Flange
Base Cover



5" Flange
Base Cover

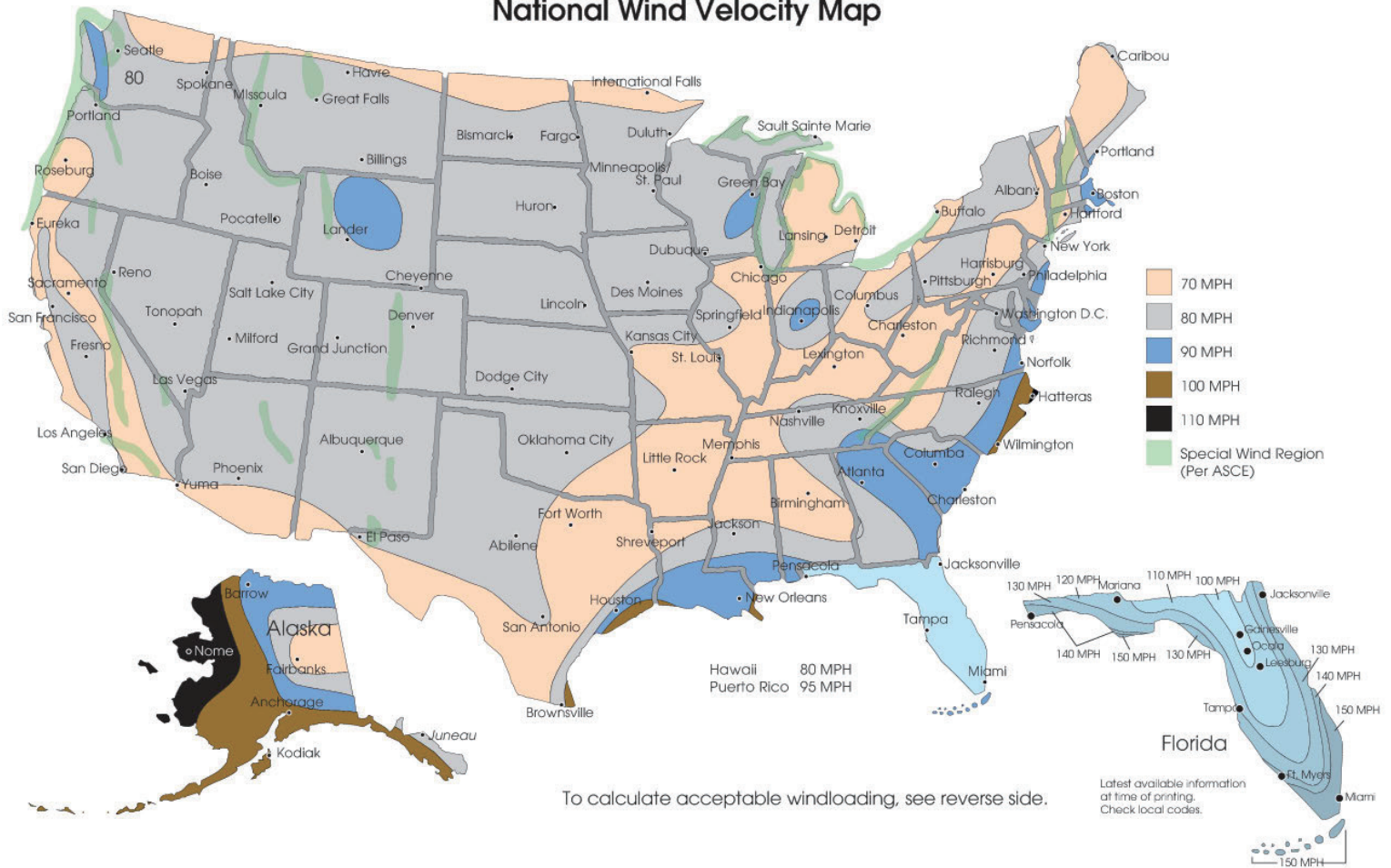
ORDERING INFORMATION

Brand	Product	Height	Size	Wall Thickness	Finish
TGS	R (Round Steel Pole)	10FT (3.0M) 15FT (4.6M) 20FT (6.1M) 25FT (7.6M) 30FT (9.1M)	3 (3") 4 (4") 5 (5")	11G (11 Gauge)	D (Dark Bronze)

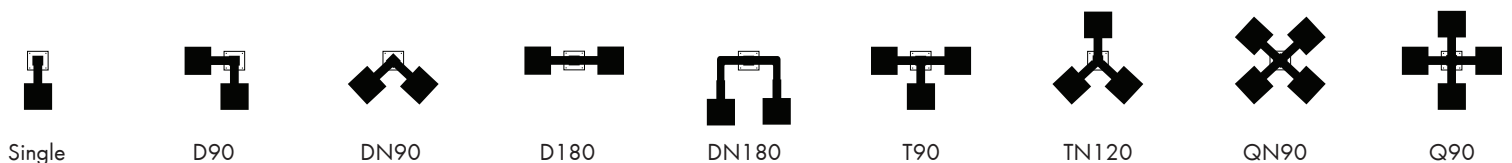
DIMENSIONS DATA

SKU	Height	Wall Thickness	Size Diameter	Pole Weight	Bolt Projection	EPA 70	EPA 80	EPA 90	EPA 100	EPA 110	EPA 120
TGS-R10FT3-11G-D	10'	11 Gauge	ø3"	46 lb.	2.75"	28.2	23.5	20.1	14.4	13.3	11.6
TGS-R15FT4-11G-D	15'	11 Gauge	ø4"	90 lb.	2.75"	18.2	15.5	13.5	11.5	9.9	7.4
TGS-R20FT4-11G-D	20'	11 Gauge	ø4"	117 lb.	2.75"	12.2	10.3	9.0	7.2	6.0	4.6
TGS-R25FT4-11G-D	25'	11 Gauge	ø4"	139 lb.	2.75"	11.9	8.9	7.7	6.1	5.6	4.2
TGS-R30FT5-11G-D	30'	11 Gauge	ø5"	180 lb.	2.75"	9.2	7.4	6.1	5.8	4.8	3.2

National Wind Velocity Map



FIXTURE CONFIGURATIONS



ACCESSORIES



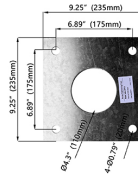
3" Base Cover
No.: TGS-IBR3-D
Finish: Dark Bronze
 The 3" Installation of base cover is used to protect the base after fixing the lamp pole, so that the lamp pole base is not damaged, thereby increasing the service life of the lamp pole.



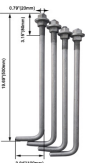
4" Base Cover
No.: TGS-IBR4-D
Finish: Dark Bronze
 The 4" Installation of base cover is used to protect the base after fixing the lamp pole, so that the lamp pole base is not damaged, thereby increasing the service life of the lamp pole.



5" Base Cover
No.: TGS-IBR5-D
Finish: Dark Bronze
 The 5" Installation of base cover is used to protect the base after fixing the lamp pole, so that the lamp pole base is not damaged, thereby increasing the service life of the lamp pole.

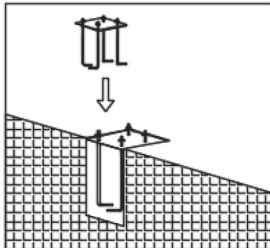


Screw Positioning Plate
No.: TGS-SPP235
 This is a screw rod positioning plate. After the screw rod of the lamp rod base is fixed underground, the positioning plate is fixed with the screw rod to prevent the screw rod from deviation. Finally, the lamp rod is locked.

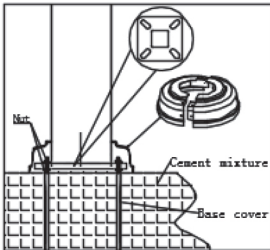


Base Mounting Screw
No.: TGS-BMS-S
Finish: Silver
 Before installing the lamp pole, the installation hook should be buried underground and fixed by cement. After fixing, the lamp pole should be fixed by locking screw and base installed.

INSTALLATION

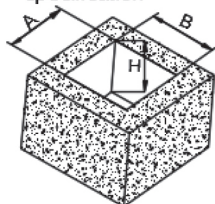


1. Dig a hole in the installation position of the lamp pole. Fixed four fastener fittings according to the hole position of lamp pole and poured with cement concrete. (as shown in the figure)



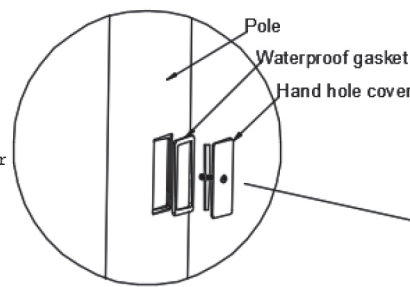
2. Install 4 screws onto the stick and adjust to same water level, then place the square plate and screw tightly. Install the cover at the bottom of pole. (as shown in the figure)

Foundation reference specification

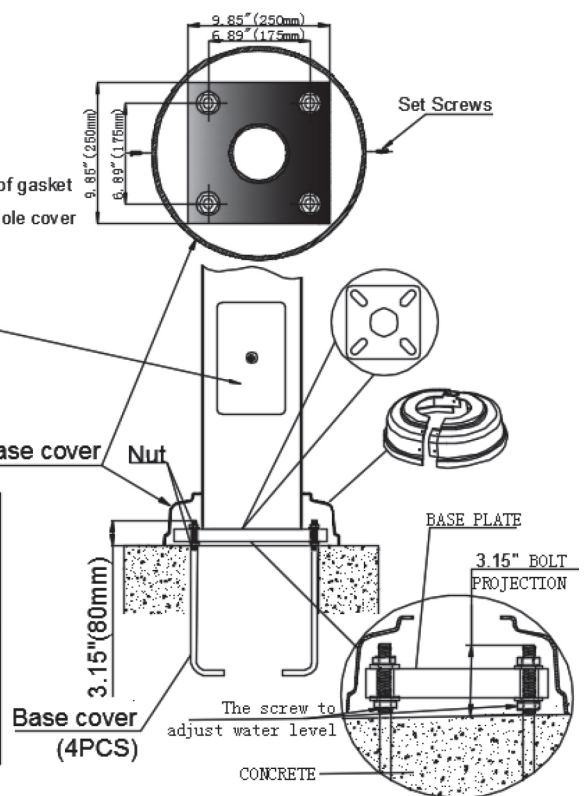


Specifications	L	W	H
10-15FT	19.69"(500mm)	19.69"(500mm)	23.62"(600mm)
20-25FT	23.62"(600mm)	23.62"(600mm)	27.56"(700mm)
30FT	27.56"(700mm)	27.56"(700mm)	27.56"(700mm)

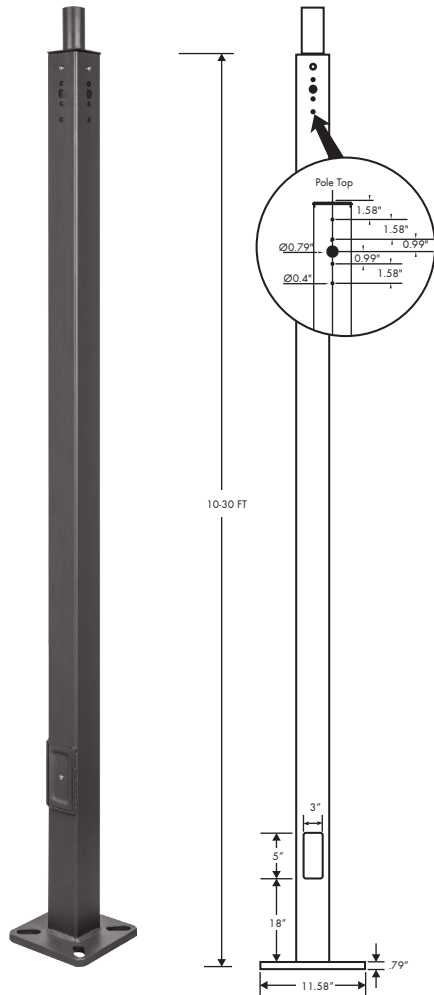
3"X5" HAND HOLE COVER



ANCHORAGE GUIDE



STRAIGHT SQUARE STEEL POLES: 4" (4"x4"), 5" (5"x5")



APPLICATIONS

Retail Centers, Industrial Parks, Schools, Universities, Public Transit, Airports, Office Buildings, and Medical Facilities

FEATURES

Specifications

Conforms to ASTM-A 500 Grade B: Minimum Yield Strength of 46,000 PSI. Pole Height Range From 10' to 30': Usage case is based on luminaire applications.

Finish

Textured architectural bronze powder coat finish: Baked to ensure maximum paint adhesion, hardness, and durability.

Anchor Bolts

Anchor bolts are included, sized based on pole data chart for the selected pole size.

Base Cover

Poles are provided with two-piece formed steel base cover that is easily assembled and fitted over the pole base.

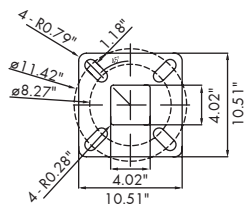
Pole Height

Shown below in ordering matrix are the available standard pole height. Usage is based on selected luminaire application.

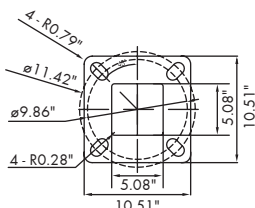
Mounting Options

Standard Poles Include 2 3/8" OD Tenon, Side Drilled 4@90 Degrees, Polycarbonate Top Cover and Hole Plugs for Unused Drilling Locations.

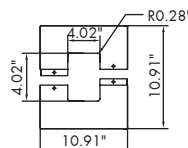
Our standard equipment is to make a top adapter with 2.5 inches. There is no opening on the top of the light pole. If ARM installation is needed, the top adapter shall be removed and holes shall be opened on the wall of the light pole. Finally, seal the top with a plastic rain cover.



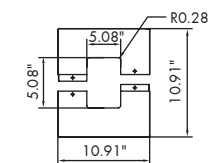
4" Flange



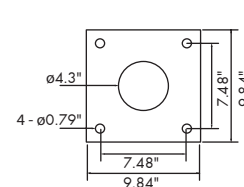
5" Flange



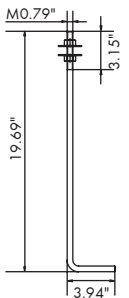
4" Flange Base Cover



5" Flange Base Cover



Anchor Positioning Plate



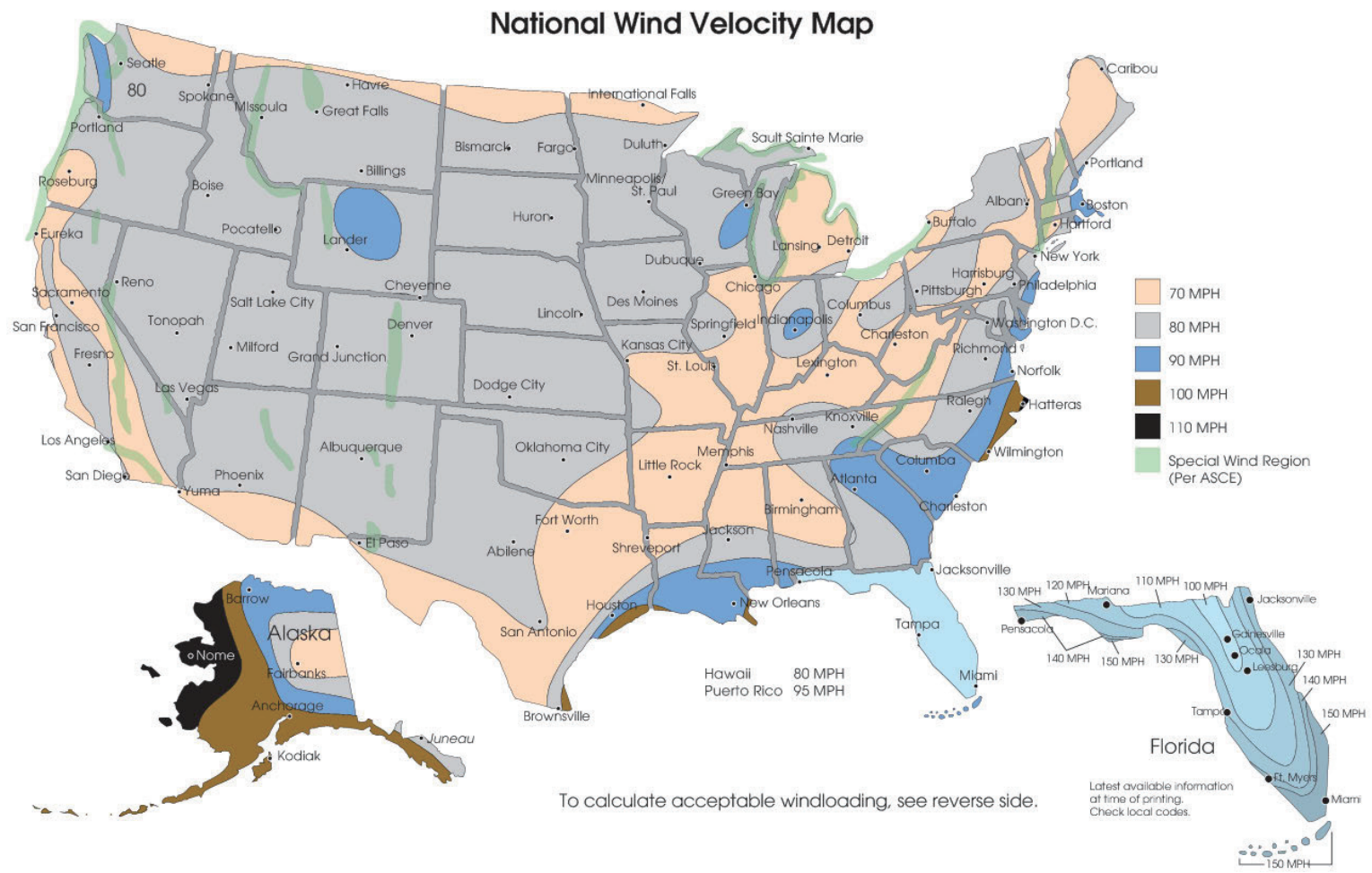
Anchor Bolt

ORDERING INFORMATION

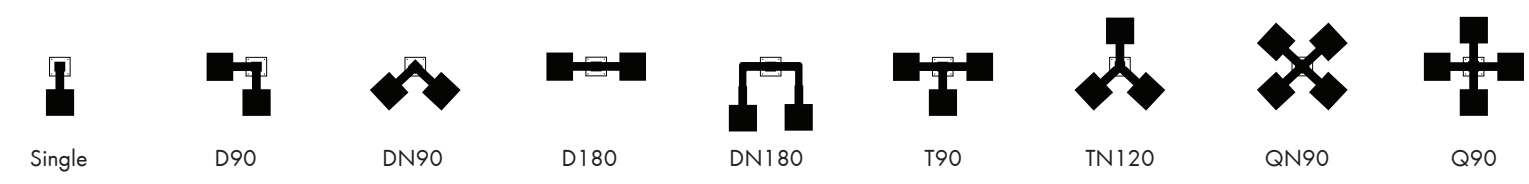
Brand	Height	Size	Wall Thickness	Finish	Mounting
TGS	10FT (3.0M) 15FT (4.6M) 20FT (6.1M) 25FT (7.6M) 30FT (9.1M)	4 (4"x4") 5 (5"x5")	11G (11 Gauge)	D (Dark Bronze)	T (2.5" Adapter)

DIMENSIONS DATA

SKU	Height	Wall Thickness	Size	Base	Bolt Circle	Bolt Projection	Bolt Size	Pole Weight	EPA 70	EPA 80	EPA 90	EPA 100	EPA 110	EPA 120
TGS-10FT4-11G-D-T	10'	11 Gauge	4"x4"	11"	8" - 10"	2.75"	¾"x17"x3"	88 lb.	25.2	20.5	17.1	11.4	10.3	9.6
TGS-15FT4-11G-D-T	15'	11 Gauge	4"x4"	11"	8" - 10"	2.75"	¾"x17"x3"	117	15.2	12.5	10.1	8.5	6.9	5.4
TGS-20FT4-11G-D-T	20'	11 Gauge	4"x4"	11"	8" - 10"	2.75"	¾"x17"x3"	152 lb.	9.2	7.3	6.0	4.2	3.0	1.6
TGS-25FT4-11G-D-T	25'	11 Gauge	4"x4"	11"	8" - 10"	2.75"	¾"x17"x3"	190 lb.	8.9	6.9	5.7	4.1	3.6	2.2
TGS-30FT5-11G-D-T	30'	11 Gauge	5"x5"	11"	10" - 12"	3.375"	¾"x17"x4"	267 lb.	7.2	5.4	4.1	3.8	2.8	1.2



FIXTURE CONFIGURATIONS



ACCESSORIES



4" Base Cover
No.: TGS-IBS4-D

Finish: Dark Bronze

The 4" Installation of base cover is used to protect the base after fixing the lamp pole, so that the lamp pole base is not damaged, thereby increasing the service life of the lamp pole.



Screw Positioning Plate
No.: TGS-SPP-D

This is a screw rod positioning plate. After the screw rod of the lamp rod base is fixed underground, the positioning plate is fixed with the screw rod to prevent the screw rod from deviation. Finally, the lamp rod is locked.



5" Base Cover
No.: TGS-IBS-D

Finish: Dark Bronze

The 5" Installation of base cover is used to protect the base after fixing the lamp pole, so that the lamp pole base is not damaged, thereby increasing the service life of the lamp pole.

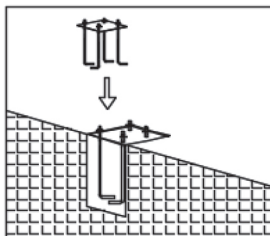


Base Mounting Screw
No.: TGS-BMS-S

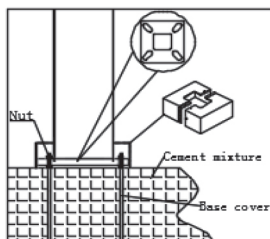
Finish: Silver

Before installing the lamp pole, the installation hook should be buried underground and fixed by cement. After fixing, the lamp pole should be fixed by locking screw and base installed.

INSTALLATION

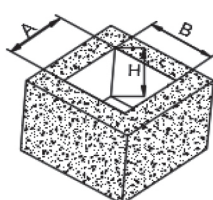


1. Dig a hole in the installation position of the lamp pole. Fixed four fastener fittings according to the hole position of lamp pole and poured with cement concrete. (as shown in the figure)



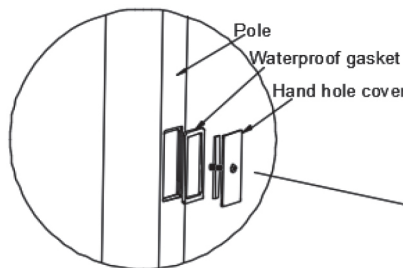
2. Install 4 screws onto the stick and adjust to same water level, then place the square plate and screw tightly. Install the cover at the bottom of pole. (as shown in the figure)

Foundation reference specification



Specifications	L	W	H
10-15FT	19.69"(500mm)	19.69"(500mm)	23.62"(600mm)
20-25FT	23.62"(600mm)	23.62"(600mm)	27.56"(700mm)
30FT	27.56"(700mm)	27.56"(700mm)	39.37"(1000mm)

3"X5" HAND HOLE COVER



ANCHORAGE GUIDE

