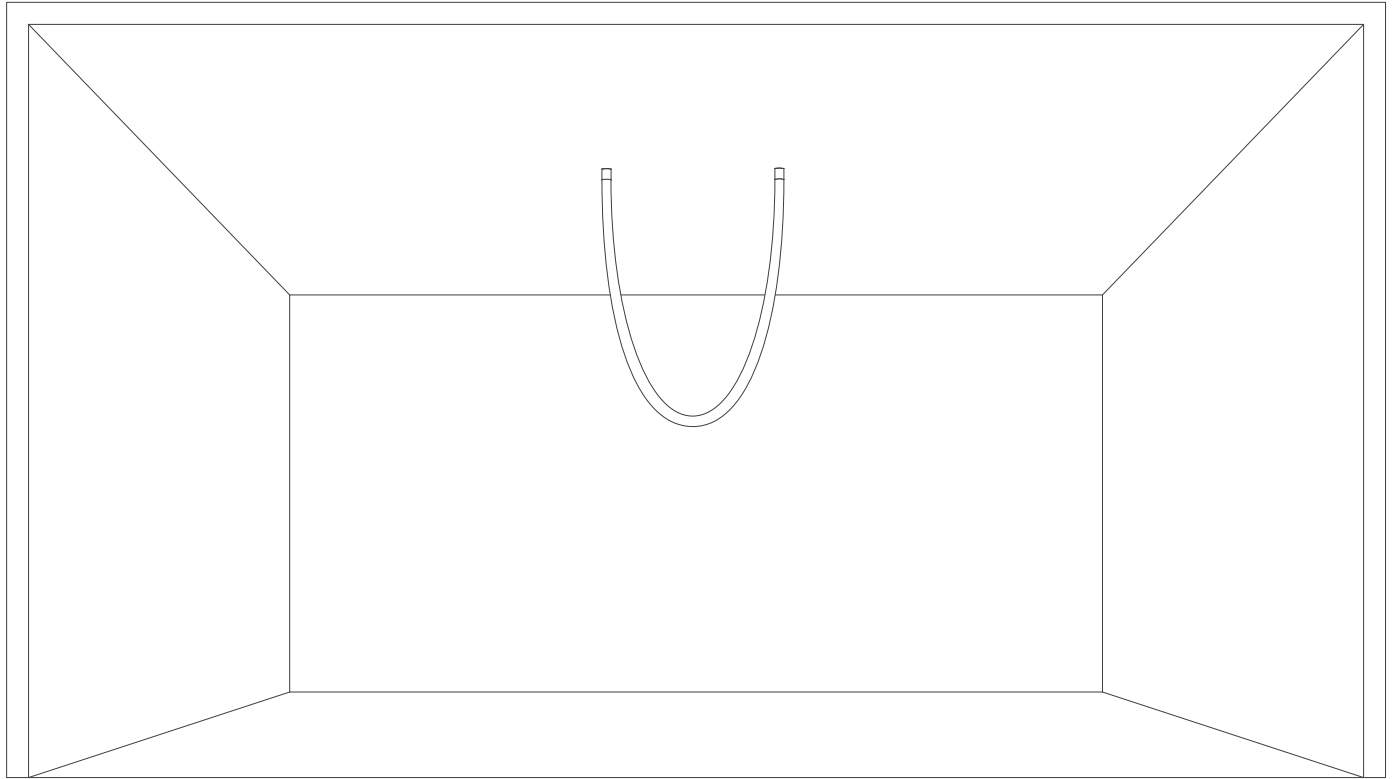


Vertical Eclipse Mount Installation Instructions



Materials List - Vertical Eclipse



LITESTRAND™



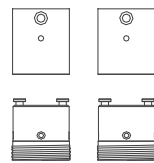
Installation
Instructions



Rubber
Plug Screws



Countersunk
Screw



Metal
Accessories



Allen
Wrench

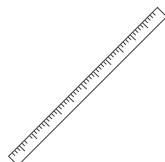
Installation Tools List



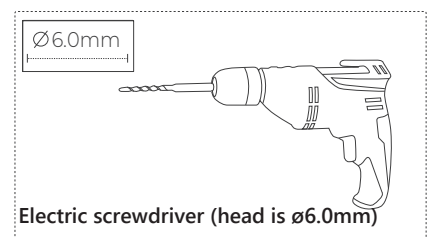
Phillips
Screwdriver



Slotted
Screwdriver



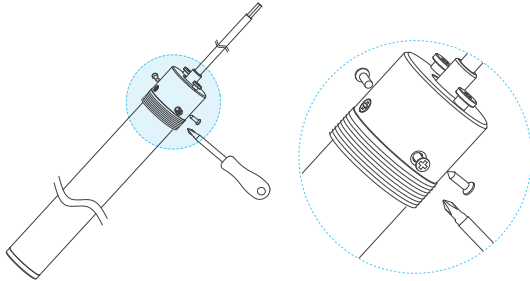
Tape measure



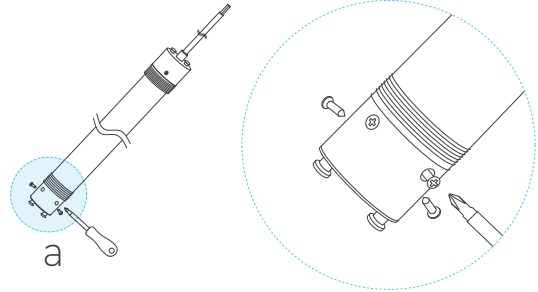
Electric screwdriver (head is Ø6.0mm)

Vertical Eclipse Mount Installation Instructions

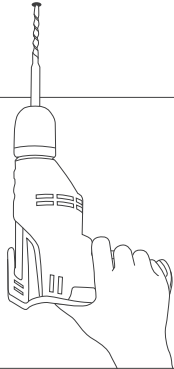
1 a 2:1



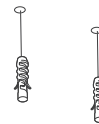
2 a 2:1



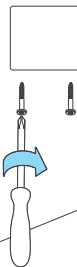
3



4



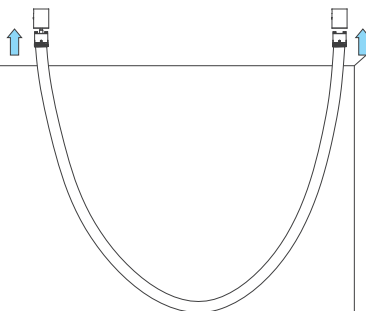
5 Screw to Secure
Mounting Plate



6



7



8 a 2:1

