



ECO AIR™ LC Backlit Panel

INSTALLATION INSTRUCTIONS

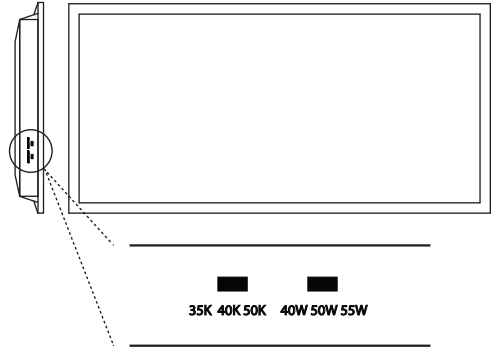
PLEASE read these instructions carefully before installation and keep for reference.

WARNINGS:

- Risk of electrical shock. Do not open or remove covers.
- Refer servicing to qualified service personnel.
- Disconnect power before repairs and maintenance.
- Risk of electrical shock. Use in dry or damp locations only.
- Risk of electrical shock. Not for use where exposed to weather.

IMPORTANT:

- Read instructions carefully before installation.
- Keep these instructions for future reference.
- The backlit LED panels must be wired in accordance with National Electrical Code and all applicable local codes.
- Proper grounding is required for safety.
- This product must be installed in accordance with the applicable installation code by a qualified electrician who is familiar with the construction and operation of the product and the hazards involved.



CAUTION:

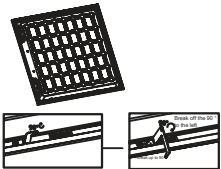
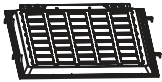
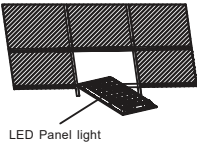
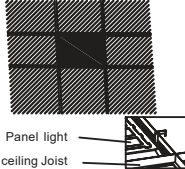
- Inherently protected.
- Access above ceiling required.
- Suitable for damp locations use.
- This product must be installed in accordance with the applicable installation code by a person who is familiar with the construction and operation of the product and the hazards involved.
- Suitable for operation in ambient not exceeding 104°F.
- Do not press the diffuser with your fingers (when installg the panel light).

Risk of fire electric shock. The backlit LED panels installation requires knowledge of luminares and electrical systems. If not qualified, DO NOT attempt installation.

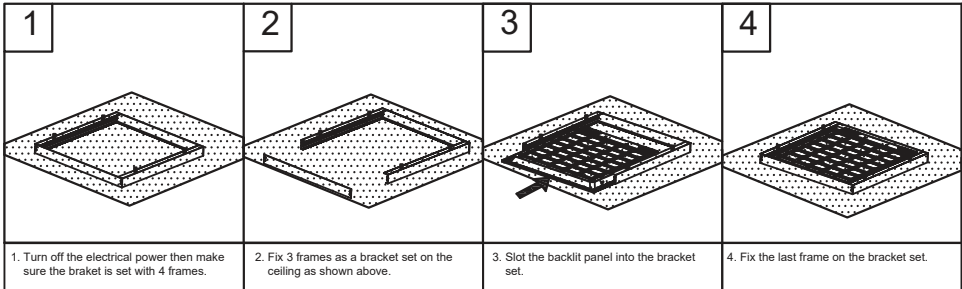
Contact a qualified electrician.

- Turn off electrical power at fuse or circuit breaker box before wiring fixture to the power supply.
- Turn off the power when you perform any maintenance.

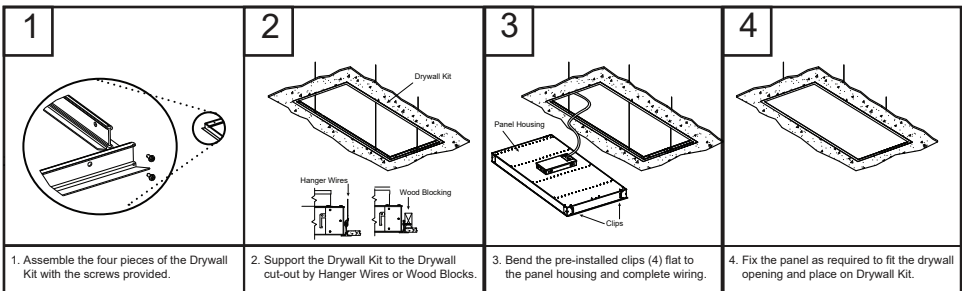
Recessed Mounting

 <p>1. Remove the original ceiling tile for the backlit LED panel.</p>	 <p>2. Turn off the electrical power then connect with L/N/GND wire leads.</p>	 <p>3. Use the protective brackets for safety.</p>	 <p>4. Adjusted appropriate location in the T bar.</p>
---	---	---	--

Surface/Ceiling Mounting (Mounting kit sold separately)



Flange Mounting (Mounting kit sold separately)



Please refer to extensive Flange Mounting Kit installation instructions for complete details.

WIRE CONNECTION:

