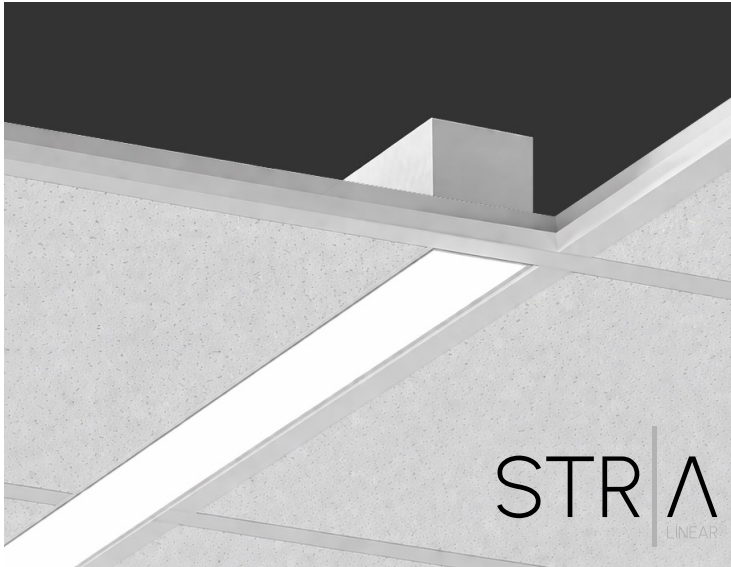


STRIA™ 3 Recessed

Direct Linear



OPTICS



Direct: PCD/PCR

APPLICATIONS

Commercial, Retail, Office, Public Spaces

FEATURES

Stria™ (pronounced STRY-uh) comes from the Latin word for "line," referencing the clean, finely etched line of light it creates in a space. This linear series is engineered for crisp, continuous illumination with a refined, architectural presence. In recessed applications, Stria™ delivers a sleek 2.75-inch aperture that elevates spaces with precision and simplicity.

Construction

- Precision cut housing extruded from 6063 aluminium
- Die-cast aluminium end-caps ensure a robust and clean construction

Finish

- White
- Black
- Silver
- Custom*

Electrical & Technical

- Input Voltage: 120-277V
- Input Frequency: 60Hz
- Projected Life: L70 > 237,000 hrs
- PF: >0.9
- CRI: >90
- THD: <15%
- CCT Options: 3000K, 3500K, or 4000K
- Operating Temp.: -13°F~ 122°F
- 8W Emergency Backup (Option)

Optical

- PC Diffuser

Installation

- Recessed mount

Warranty

- 5 Year Warranty. See warranty documentation for more information.

Dimming

- 0-10V Dim to 1%

Efficacy

- Up to 125 Lm/W



ORDERING INFORMATION EXAMPLE: STR-3R-2-L-PCD-D-30-U-RMTA-WH

Series	Length	Direct Output ^{2,3}	Direct Optics ³	Dimming ³	CCT ³	Voltage ³
STR-3R	2 - 2 feet ³ 3 - 3 feet 4 - 4 feet ³ 6 - 6 feet 8 - 8 feet ³ XX' - Continuous row ¹	L - 7.5 W/FT M - 10 W/FT H - 12.5 W/FT	PCD - PC Diffuser (Standard) PCR - Continuous Run Lens	D - 0-10V Dim to 1%	30 - 3000K 35 - 3500K 40 - 4000K	U - 120-277V

Mounting	Finish	Options & Accessories
RMTA - Recessed Flanged Grid ³ RMM - Recessed Trimless Mud-in RMC - Recessed Flanged Hard Ceiling	BK - Black WH - White ³ S - Silver CUS - Custom	EM - 8W Internal Battery Backup ^{3,4}

Notes

1. Specify number of feet for continuous row. 1' increments starting at 2'.
2. Custom output available; contact factory
3. Quick ship.
4. Available on 4' and longer configurations only.

SPECIFICATIONS

Construction

- Precision cut housing extruded from 6063 aluminium
- Die-cast aluminium end-caps ensure a robust and clean construction

Electrical

- 8W internal battery backup available.
- Standard CCT: 3000K, 3500K, or 4000K
- CRI: Ra ≥90

LED Drivers

- Class II UL certified driver
- Flicker free <5%
- PFC >0.9
- THD <15%

Controls & Integrated Sensors

- 0-10V continuous dimming driver (standard)
- Dimming wires capped with wire-nuts for non-dimming applications
- Compatible with most standard dimming devices

Linear Load

- Total connected load:
 - <420W at 120V
 - <960W at 277V

Lumen Maintenance

- 90% (L90) of initial light output at 61,000+ hrs
- 70% (L70) of initial light output at 237,000+ hrs

Emergency Battery Backup

- Available on 4' and longer configurations only. Emergency operation is provided on a per-driver basis; fixtures with multiple drivers require a corresponding emergency driver for each driver to maintain full emergency illumination. Please contact TGS to verify the required number of emergency drivers based on fixture length and driver configuration.

Lengths

- 2 ft, 3 ft, 4 ft, 6 ft, 8 ft

Finishes

- Powder coat finishes
- Standard



Black White Silver

- Custom (Any Custom Color Available)

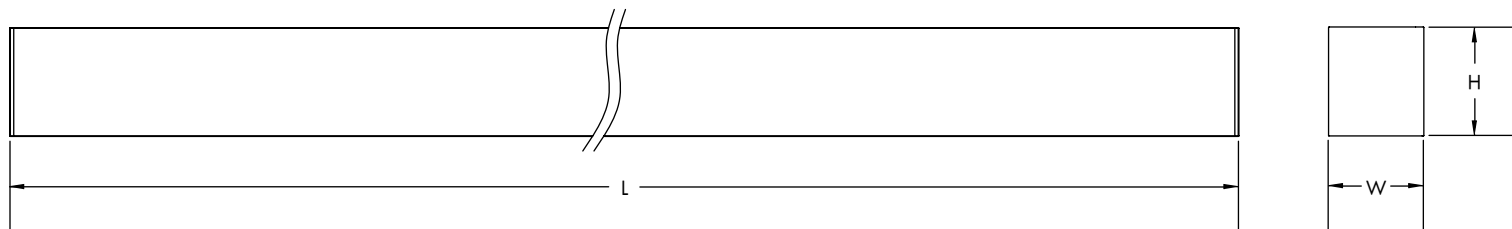
OpticalPC Diffuser
PCDPC Continuous
Run Lens
PCR**Installation**

- Recessed mount

Weight

- ~1.4 lbs. per foot

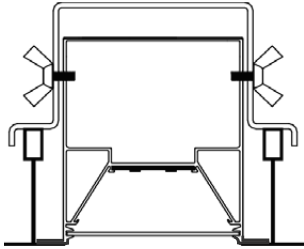
DIMENSIONS



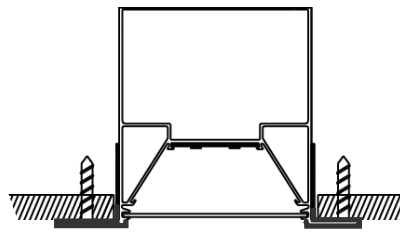
Size	Dimensions		
	Length (L)	Width (W)	Height (H)
2'	23.85"	2.75"	3.15"
3'	35.67"		
4'	47.48"		
6'	71.10"		
8'	94.72"		

MOUNTING

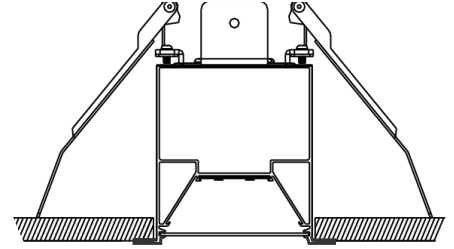
RMTA: Recessed Flanged Grid



RMM: Recessed Trimless Mud-in



RMC: Recessed Flanged Hard Ceiling



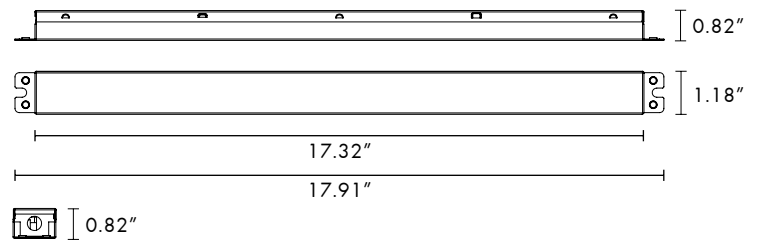
ACCESSORIES

Emergency Backup



8W Internal Battery Backup
8EM

Dimensions



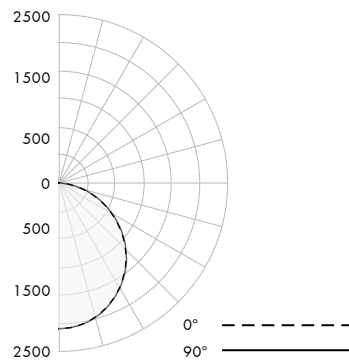
Features

- Powers 8W to 200W
- 90-Minute LiFePO4 Battery
- Rated Input Voltage: 100-347V, 100-277VAC, 50/60Hz
- Input Current: 20-100mA
- 24-Hour Recharge Time
- Ambient Operating Temperature: 50-140°F
- Service Life: 50,000 Hours
- LED Indicator Light
- UL Listed for Dry & Damp Locations

PHOTOMETRICS

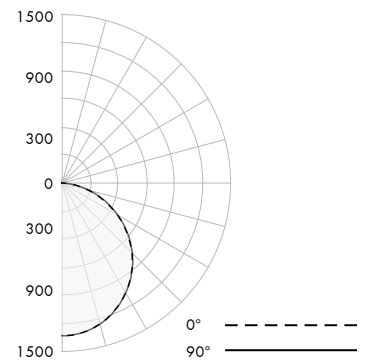
STRIA-3R: 4' / 4000K

- Efficacy: 125.54 lm/W
- Lumens/Foot: 1518.98 lm/ft
- Nominal Power: 50W
- Input Voltage: 120V



STRIA-3R: 4' / 4000K

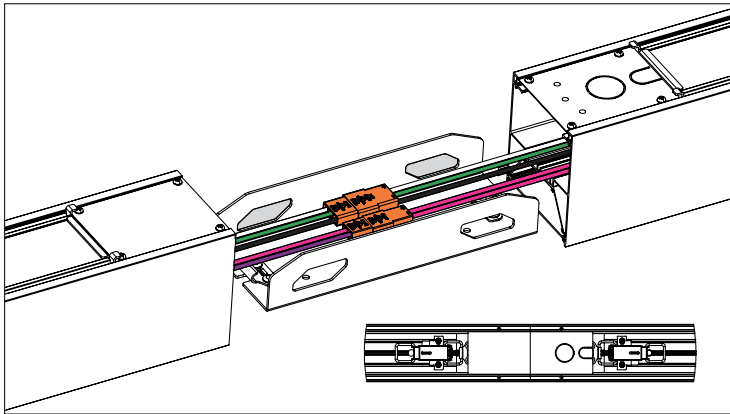
- Efficacy: 130.99 lm/W
- Lumens/Foot: 962.76 lm/ft
- Nominal Power: 30W
- Input Voltage: 120V



PERFORMANCE

100% Direct					
Length	Watts/Foot	Total Watts	Lumens/Foot	Total Lumens	Efficacy
2'	Low 7.5 W/ft	15	937.5 Lm/Ft	1875	125 Lm/W
3'		22.5		2812.5	
4'		30		3750	
6'		45		5625	
8'	60	7500			
2'	Medium 10 W/ft	20	1250 Lm/Ft	2500	125 Lm/W
3'		30		3750	
4'		40		5000	
6'		60		7500	
8'	80	10000			
2'	High 12.5 W/ft	25	1562.5 Lm/Ft	3125	125 Lm/W
3'		37.5		4687.5	
4'		50		6250	
6'		75		9375	
8'	100	12500			

CONTINUOUS ROW DIAGRAM



Continuous Row Bracket